



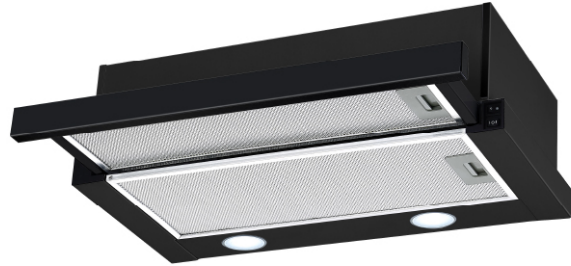
Model:	WRS60AB-L
Code:	9351116006396
Barcode Number:	9351116006396

# Product Data Sheet

## WRS60AB-L

### Product Features

- 600 Slide-out Rangehood
- Black Powdercoated body
- Black Front Rail
- LED Lights
- Rocker-Switch Controls
- 2 Power Levels
- 440m<sup>3</sup>/h Extraction
- Ducted or Recirculated\*



\*Recirculating Kit sold separately

### Product Specifications

#### General

Dimensions : W598 x D280 x H176 mm	Extraction type : Ducted or Recirculated	Light location : Rear
Front rail height : 40mm or 80mm*	Ducting outlet : 120mm (Centre)	Filter type : Aluminium panel
Front rail thickness : 20mm	Location of controls : Front, Right-hand side	Filter Cleaning : Dishwasher Safe
Fascia type : Black	Control type : Rocker	Round Carbon Filter : Optional
Body colour : Black	Speed settings : 2	
Extraction rate : 440m <sup>3</sup> /h (twin motor)	Noise levels : 51/56dB	

#### Electrical

Supply voltage : 240V~	Motor : Twin motors - 2 x 100W	Connection : 10A Plug
Supply frequency : 50Hz	Lighting type : 2 x 3W - GU10 LED	Cable length : 1500mm

#### Accessories

--	--	--

Aluminium Panel Filter - Small : 2306010.002  
**Packaging**

Aluminium Panel Filter - Large : 2306010.001

Round Carbon Filter Set (opt.) : 2306011.005

Carton : Brown Carton

Gross Weight : 10.0kg

Stacking Height : 6

Dimensions : W665 x D225 x H355mm

Net Weight : 8.5kg